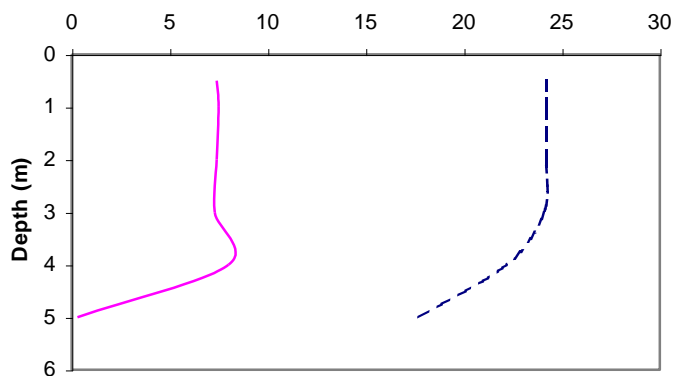
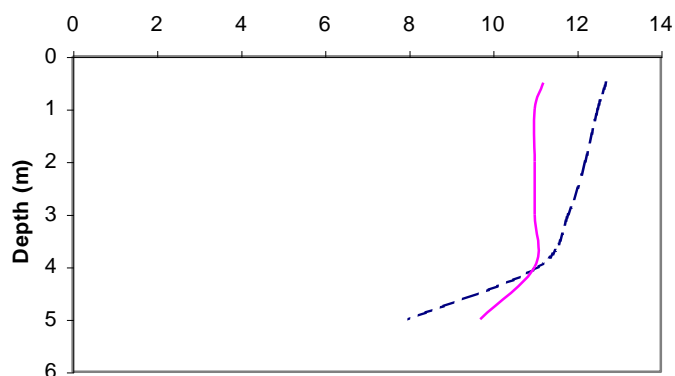


Weismuller Lake

Municipality:	Bracebridge	Watershed:	Sparrow Lake
Surface Area:	0.13 km²	Watershed Area (excluding lake):	1.67 km²
Maximum Depth:	5 m	Mean Depth:	1.63 m
Wetland Area:	25 %	Cold Water Fishery?	No
Phosphorus (interim average 1998-2007):	17.3 µg/L	Secchi Depth (long-term average):	2.7 m
Phosphorus (long-term average 1992-2001):	18.9 µg/L	Sensitivity:	Moderate

May 2007

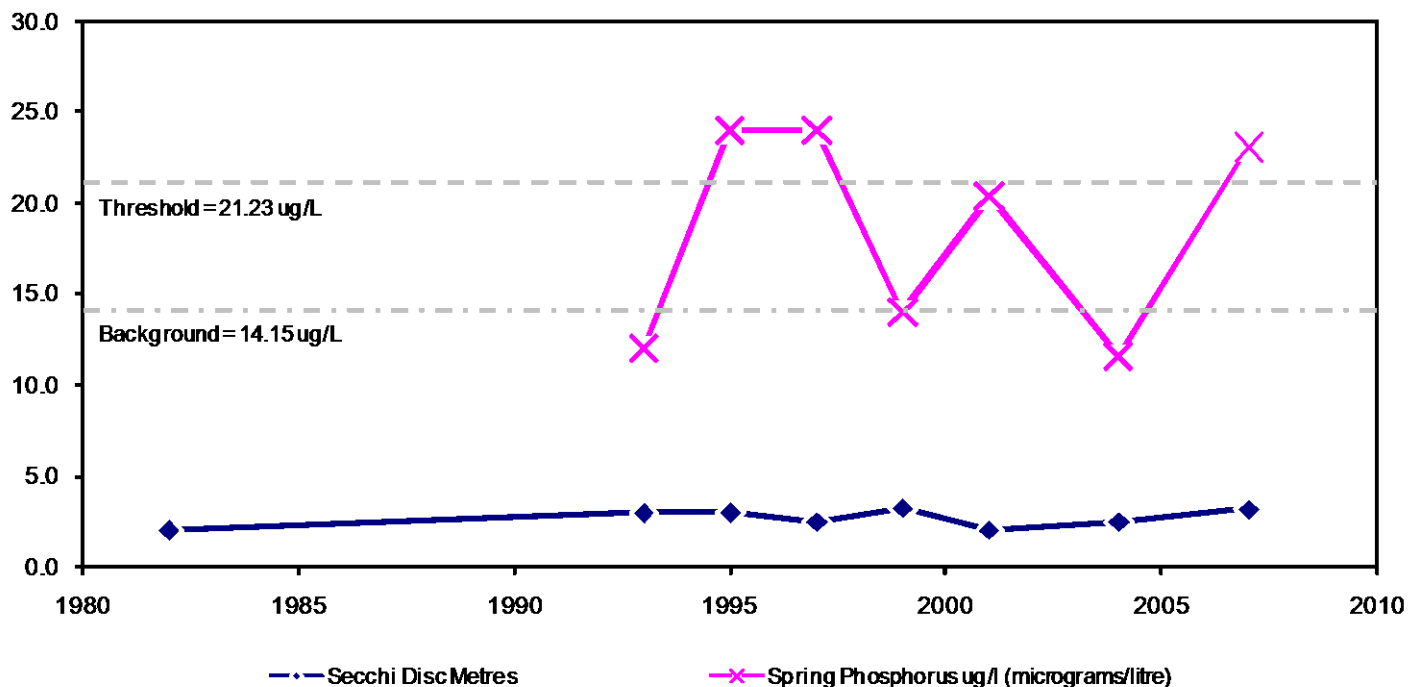
August 2007



--- Temperature (°C) — Dissolved Oxygen (mg/L)

--- Temperature (°C) — Dissolved Oxygen (mg/L)

Weismuller Lake Long Term Monitoring Data



This information is supplied without expressed or implied warranty of any kind, including warranty of fitness for a particular purpose. In no event will the District Municipality of Muskoka be liable for any damages, whether incidental, consequential or direct in conjunction with, or arising from the furnishing or use of this information.