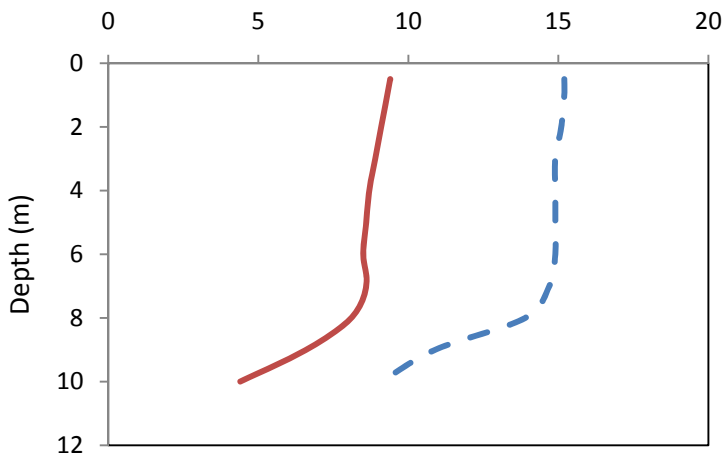


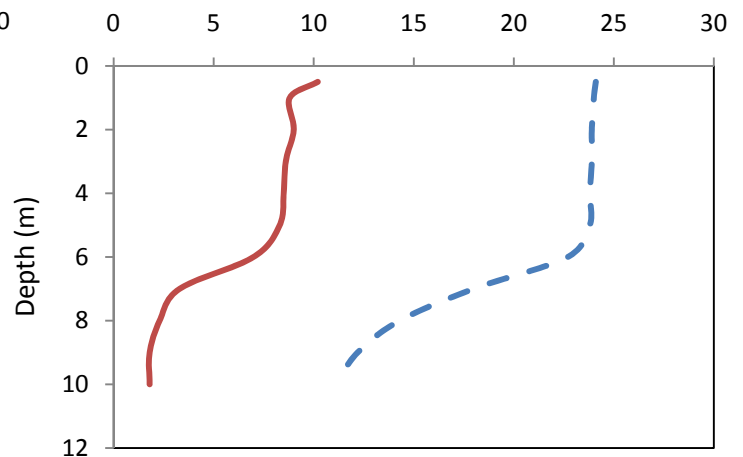
## Twelve Mile Bay – West

Municipality:	<b>Georgian Bay</b>	Watershed:	<b>West</b>
Surface Area:	<b>2.3 km<sup>2</sup></b>	Watershed Area (excluding lake):	<b>26.7 km<sup>2</sup></b>
Maximum Depth:	<b>28 m</b>	Cold Water Fishery?	<b>Yes</b>
Wetland Area:	<b>4.87 %</b>	Secchi Depth (10-year average):	<b>9.1 m</b>
Phosphorus (10-year average 1999-2008):	<b>5.8 µg/L</b>	Sensitivity:	<b>Moderate</b>

**May 2008**

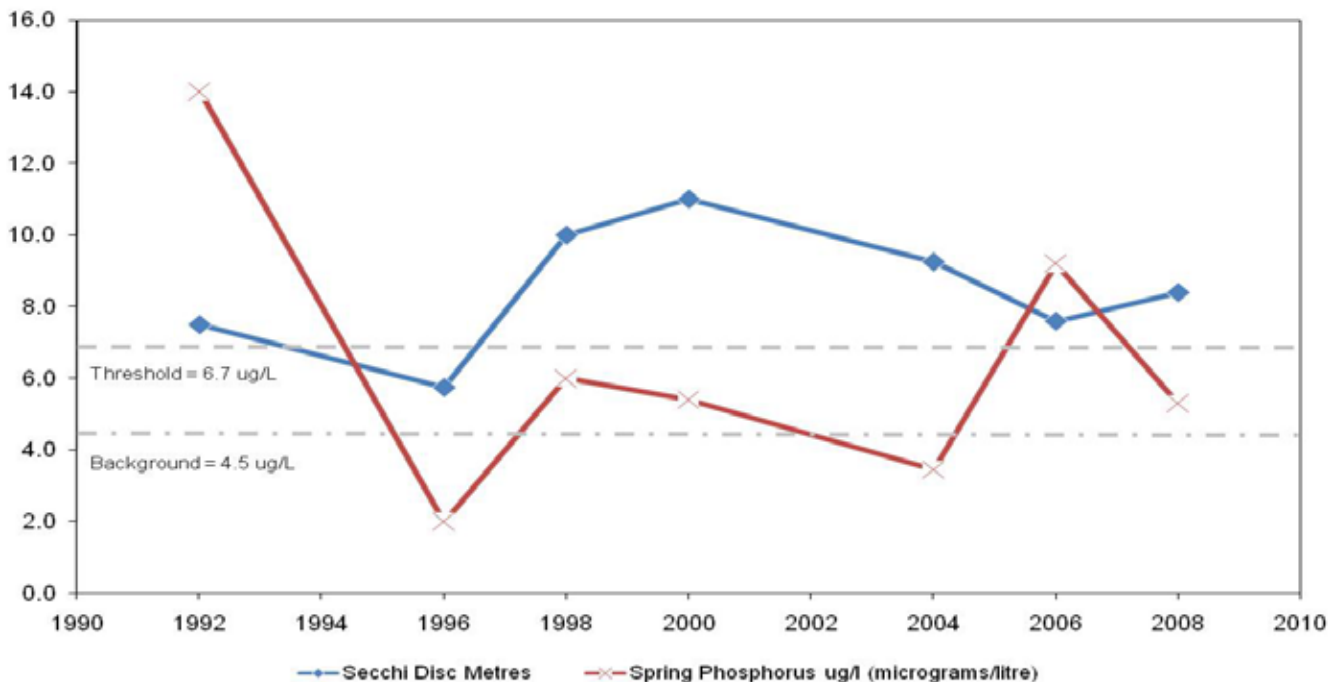


**August 2008**



— — Temperature (°C) — — Dissolved Oxygen (mg/L) — — Temperature (°C) — — Dissolved Oxygen (mg/L)

### Twelve Mile Bay - West Long Term Monitoring Data



This information is supplied without expressed or implied warranty of any kind, including warranty of fitness for a particular purpose. In no event will the District Municipality of Muskoka be liable for any damages, whether incidental, consequential or direct in conjunction with, or arising from the furnishing or use of this information.