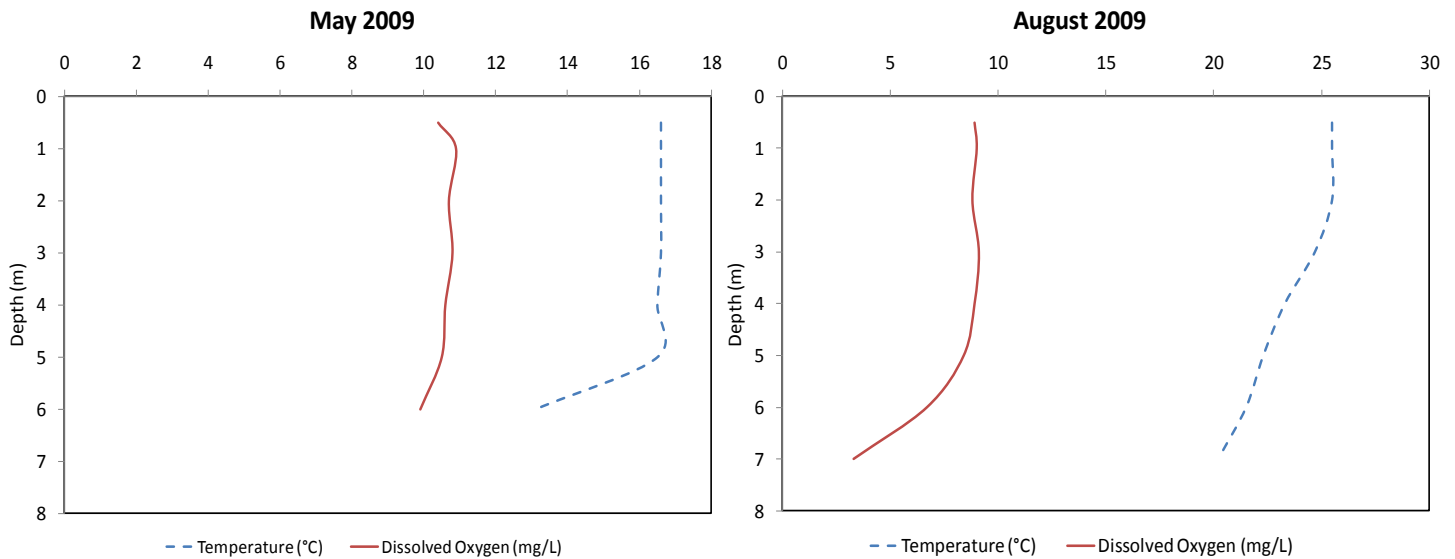
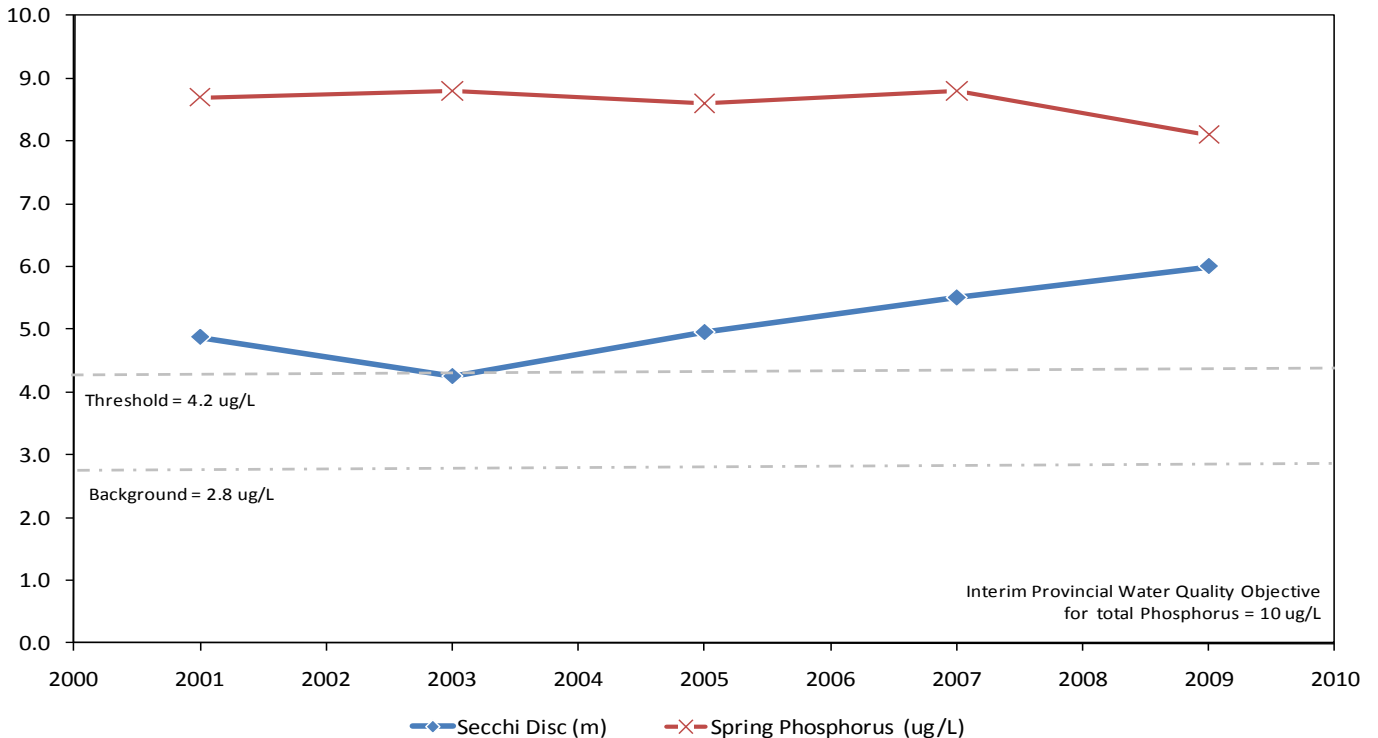


# Six Mile Lake – Provincial Park Bay

Municipality:	<b>Georgian Bay</b>	Watershed:	<b>West</b>
Surface Area:	<b>1.35 km<sup>2</sup></b>	Watershed Area (excluding lake):	<b>3.75 km<sup>2</sup></b>
Maximum Depth:	<b>7 m</b>	Lake Trout Lake?	<b>No</b>
Wetland Area:	<b>5.34 %</b>	Secchi Depth (10-year average):	<b>5.1 m</b>
Phosphorus (10-year average 2000-2009):	<b>8.6 µg/L</b>	Sensitivity:	<b>High (OT)</b>



## Six Mile Lake - Provincial Park Bay Long Term Monitoring Data



This information is supplied without expressed or implied warranty of any kind, including warranty of fitness for a particular purpose. In no event will the District Municipality of Muskoka be liable for any damages, whether incidental, consequential or direct in conjunction with, or arising from the furnishing or use of this information.