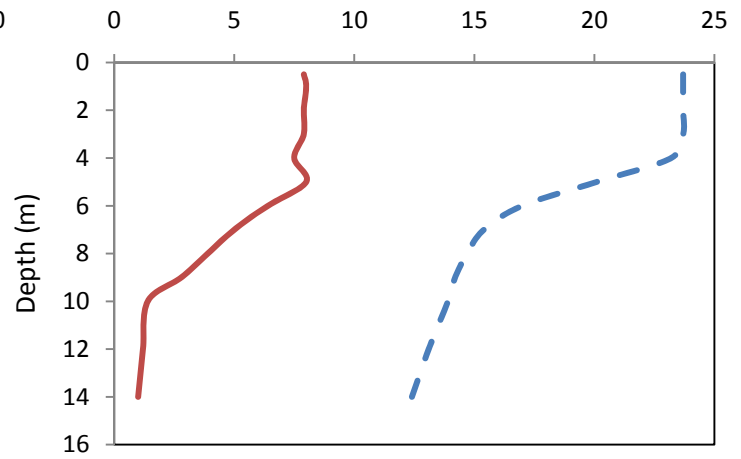
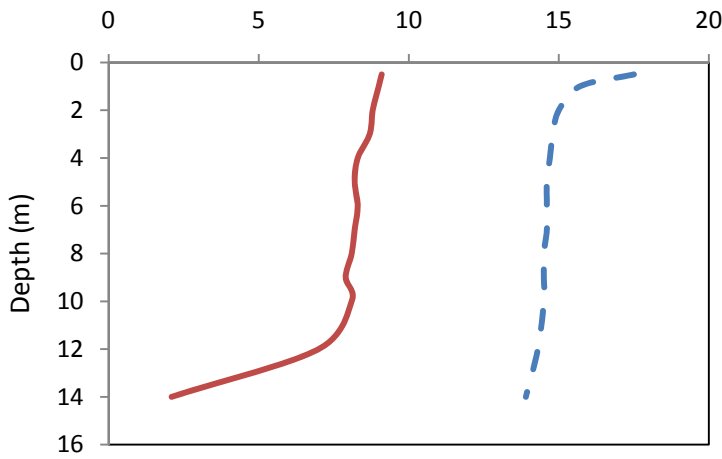


McDonald Lake

Municipality:	Georgian Bay	Watershed:	West
Surface Area:	0.2 km²	Watershed Area (excluding lake):	2.76 km²
Maximum Depth:	16 m	Cold Water Fishery?	No
Wetland Area:	6.09 %	Secchi Depth (10-year average):	5.0 m
Phosphorus (10-year average 1999-2008):	10.1 µg/L	Sensitivity:	Moderate

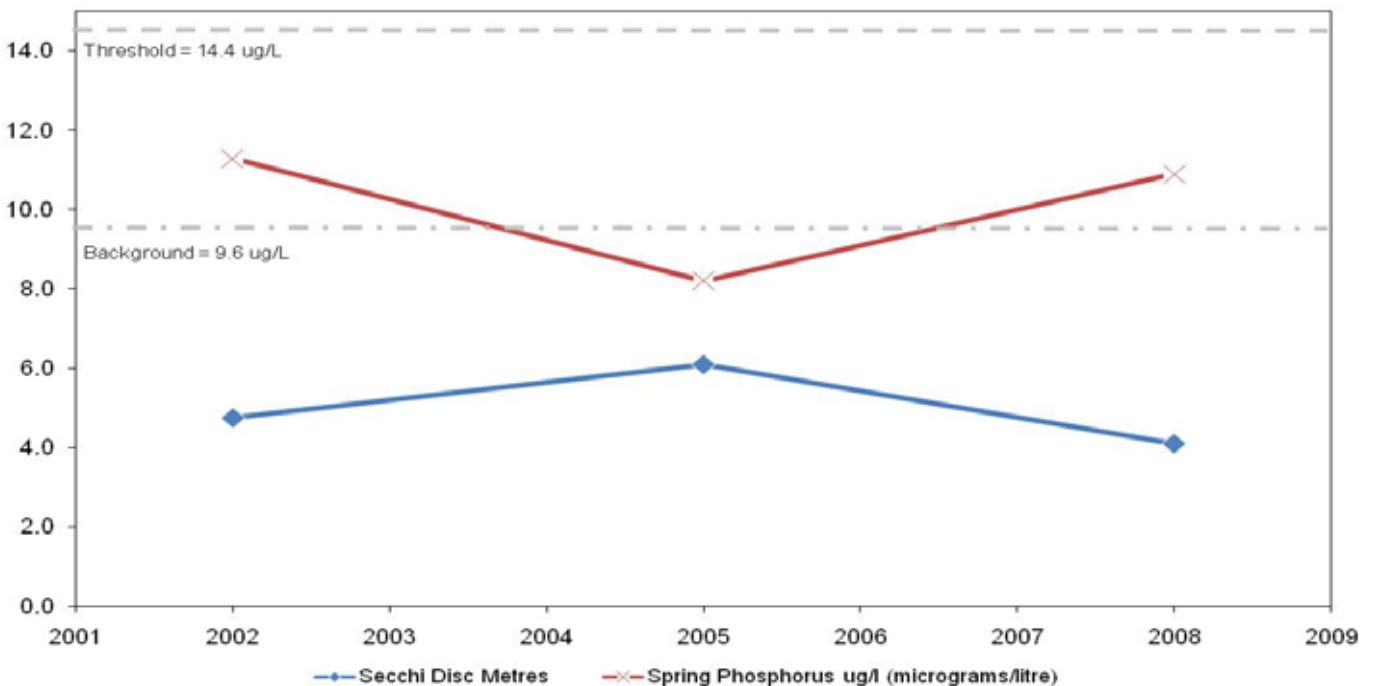
May 2008

August 2008



— — Temperature (°C) — Dissolved Oxygen (mg/L) — — Temperature (°C) — Dissolved Oxygen (mg/L)

McDonald Lake Long Term Monitoring Data



This information is supplied without expressed or implied warranty of any kind, including warranty of fitness for a particular purpose. In no event will the District Municipality of Muskoka be liable for any damages, whether incidental, consequential or direct in conjunction with, or arising from the furnishing or use of this information.