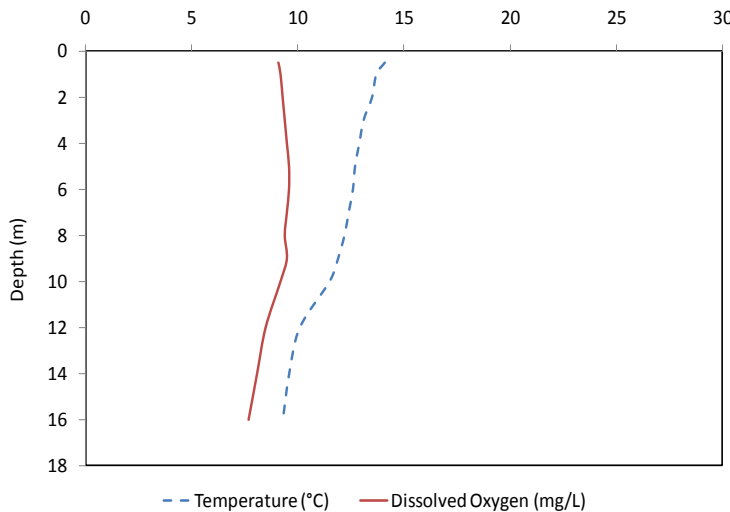


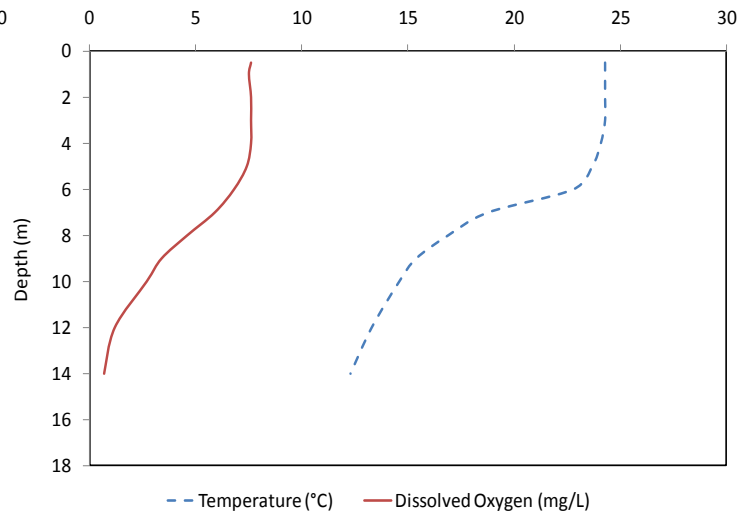
Long Lake

| | | | |
|-------------------------------|----------------------------|----------------------------------|----------------------------|
| Municipality: | Muskoka Lakes | Watershed: | Lake Muskoka |
| Surface Area: | 1.31 km² | Watershed Area (excluding lake): | 2.89 km² |
| Maximum Depth: | 17 m | Lake Trout Lake? | No |
| Wetland Area: | 5.92 % | Secchi Depth (10-year average): | 4.6 m |
| Phosphorus (10-year average): | 6.3 µg/L | Sensitivity: | High (OT) |

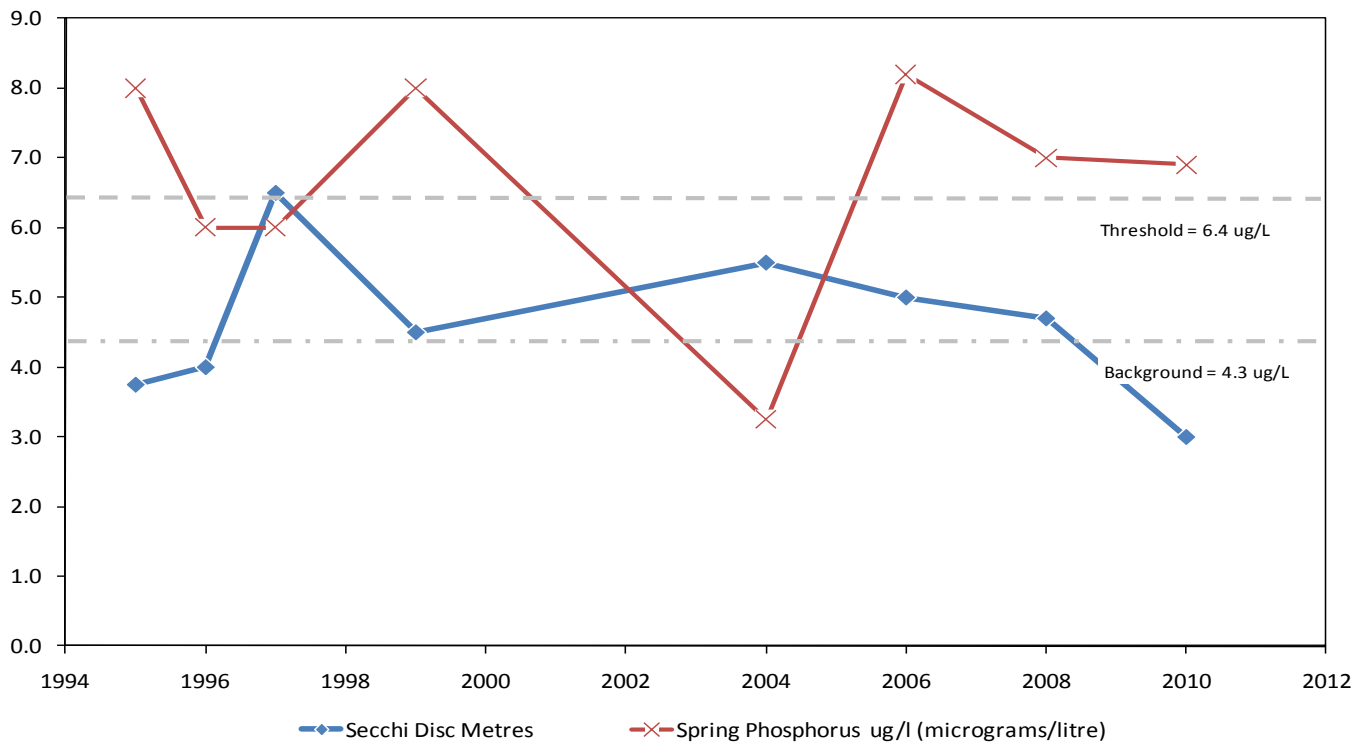
May 2010



August 2010



Long Lake Long Term Monitoring Data



This information is supplied without expressed or implied warranty of any kind, including warranty of fitness for a particular purpose. In no event will the District Municipality of Muskoka be liable for any damages, whether incidental, consequential or direct in conjunction with, or arising from the furnishing or use of this information.