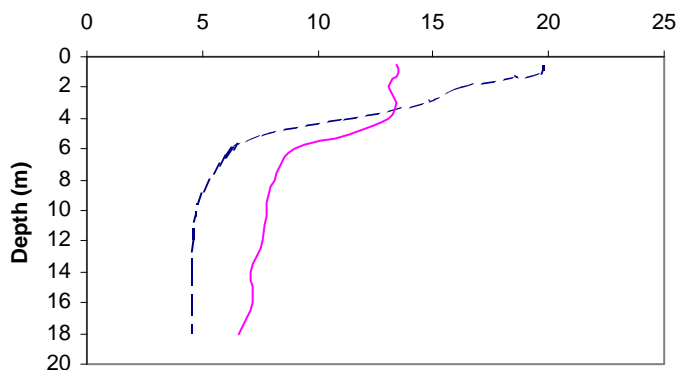


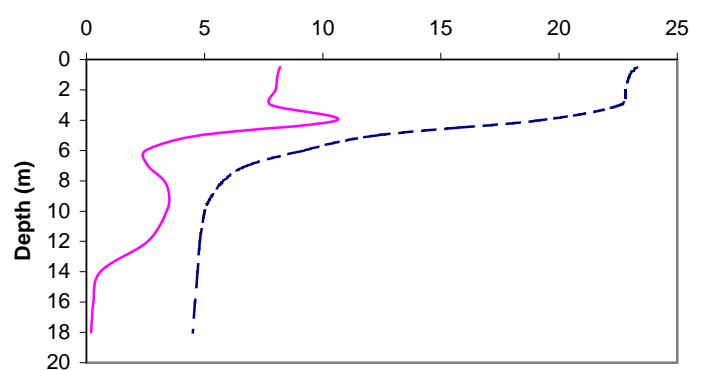
# Gilleach Lake

Municipality:	<b>Bracebridge</b>	Watershed:	<b>Muskoka River</b>
Surface Area:	<b>0.38 km<sup>2</sup></b>	Watershed Area (excluding lake):	<b>1.32 km<sup>2</sup></b>
Maximum Depth:	<b>18 m</b>	Mean Depth:	<b>N/A</b>
Wetland Area:	<b>30 %</b>	Cold Water Fishery?	<b>No</b>
Phosphorus (interim average 1998-2007):	<b>11.6 µg/L</b>	Secchi Depth (long-term average):	<b>3.2 m</b>
Phosphorus (long-term average 1992-2001):	<b>10.9 µg/L</b>	Sensitivity:	<b>Moderate</b>

May 2007



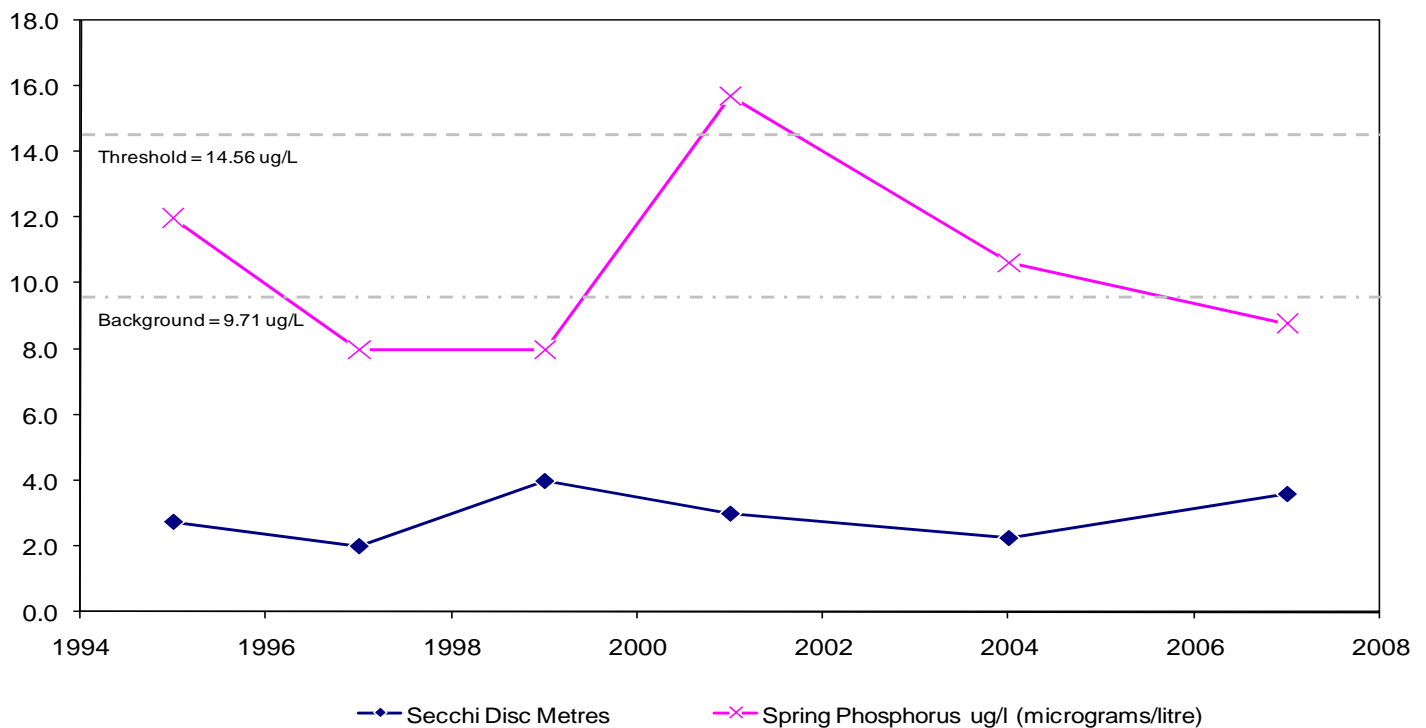
August 2007



--- Temperature (°C)    — Dissolved Oxygen (mg/L)

--- Temperature (°C)    — Dissolved Oxygen (mg/L)

## Gilleach Lake Long Term Monitoring Data



—◆— Secchi Disc Metres

—x— Spring Phosphorus ug/l (micrograms/litre)