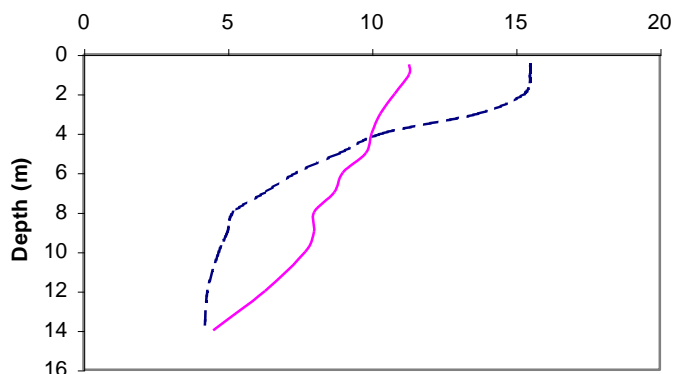


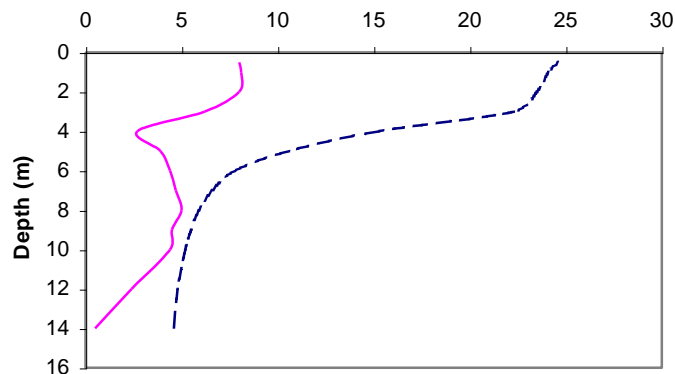
Gartersnake (Long) Lake

Municipality:	Bracebridge	Watershed:	Sparrow Lake
Surface Area:	0.32 km²	Watershed Area (excluding lake):	12.38 km²
Maximum Depth:	17 m	Mean Depth:	6.9 m
Wetland Area:	8 %	Cold Water Fishery?	No
Phosphorus (interim average 1998-2007):	10.8 µg/L	Secchi Depth (long-term average):	2.1 m
Phosphorus (long-term average 1992-2001):	13.5 µg/L	Sensitivity:	Moderate

May 2007



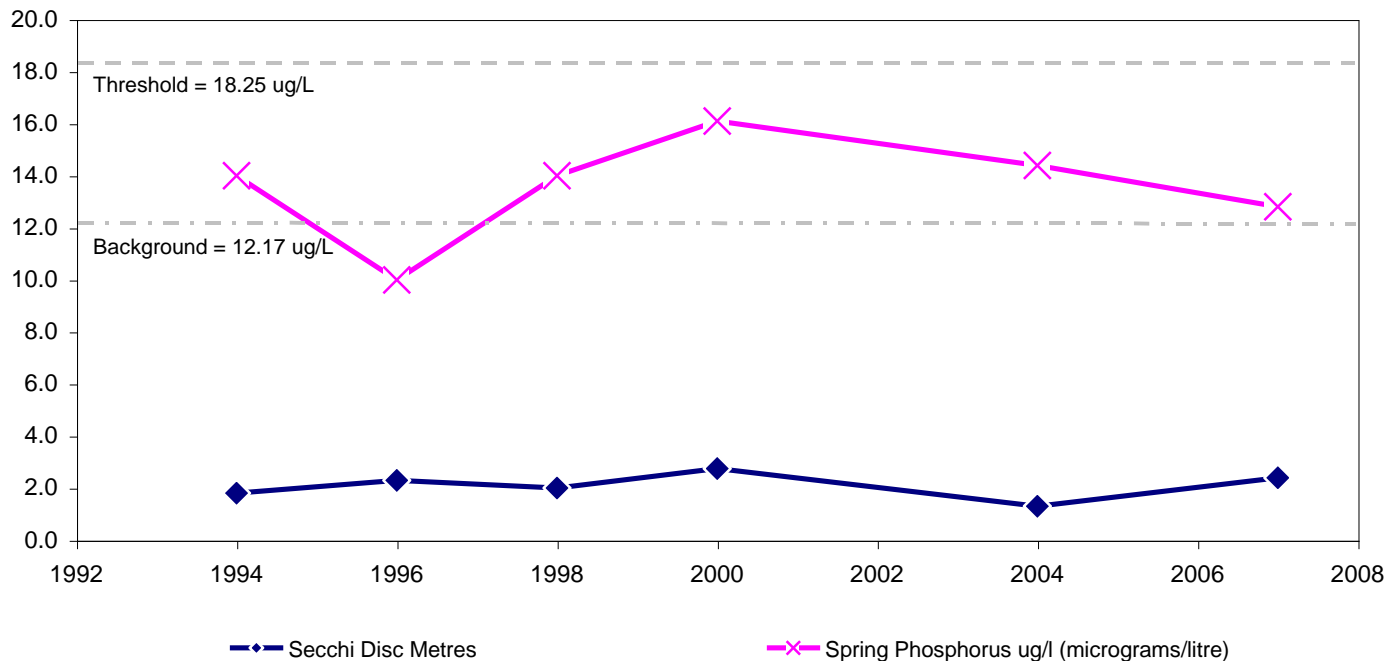
August 2007



--- Temperature (°C) — Dissolved Oxygen (mg/L)

--- Temperature (°C) — Dissolved Oxygen (mg/L)

Gartersnake Lake Long Term Monitoring Data



◆ Secchi Disc Metres

× Spring Phosphorus ug/l (micrograms/litre)