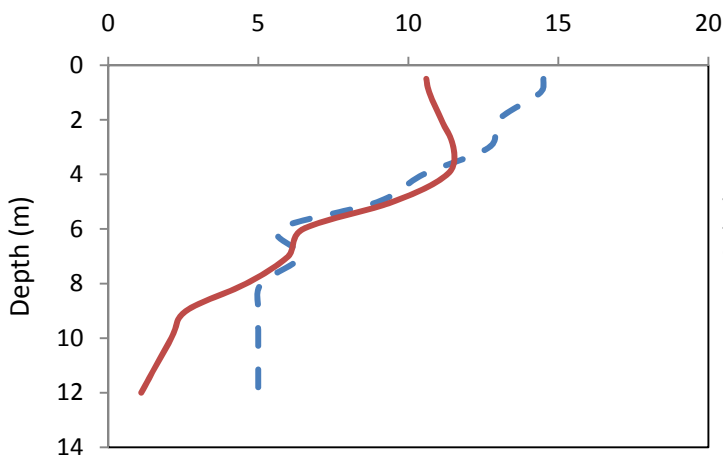


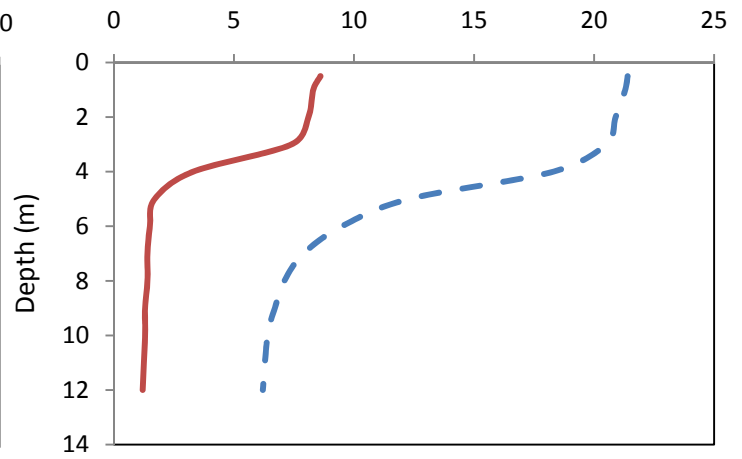
Chub Lake

Municipality:	Huntsville	Watershed:	Mary Lake
Surface Area:	0.27 km ²	Watershed Area (excluding lake):	0.85 km ²
Maximum Depth:	12 m	Cold Water Fishery?	No
Wetland Area:	20 %	Secchi Depth (10-year average):	2.9 m
Phosphorus (10-year average 1999-2008):	9.3 µg/L	Sensitivity:	Moderate

May 2008

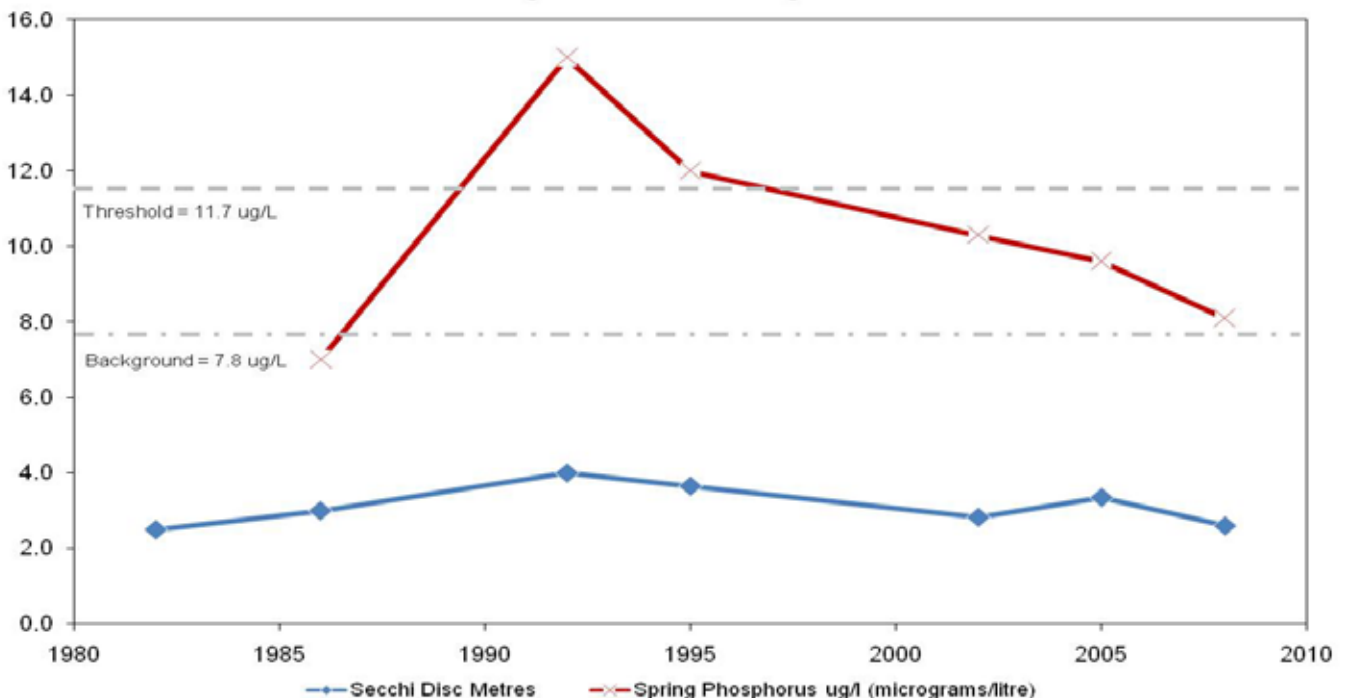


August 2008



— Temperature (°C) — Dissolved Oxygen (mg/L) — Temperature (°C) — Dissolved Oxygen (mg/L)

Chub Lake
 Long Term Monitoring Data



This information is supplied without expressed or implied warranty of any kind, including warranty of fitness for a particular purpose. In no event will the District Municipality of Muskoka be liable for any damages, whether incidental, consequential or direct in conjunction with, or arising from the furnishing or use of this information.