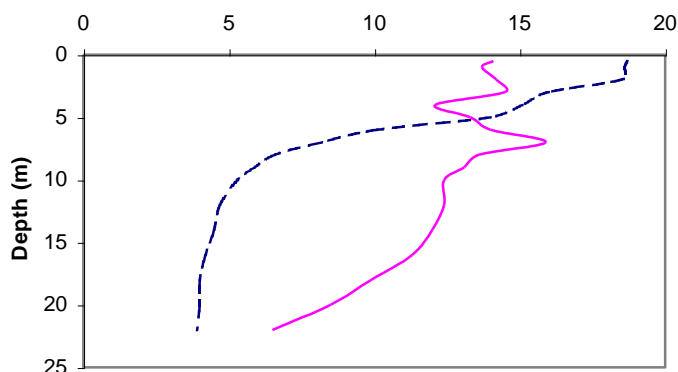


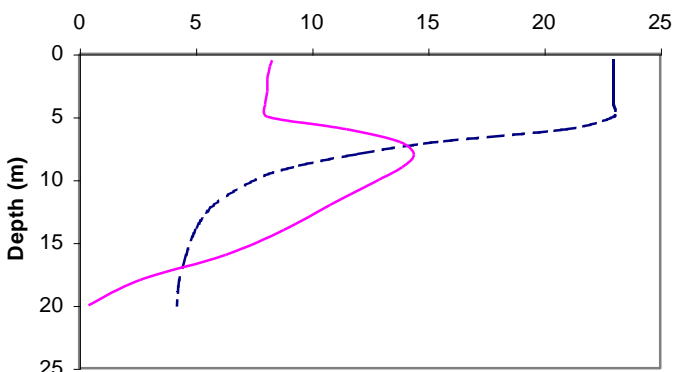
# Bonnie Lake

Municipality:	<b>Bracebridge</b>	Watershed:	<b>Muskoka River</b>
Surface Area:	<b>0.43 km<sup>2</sup></b>	Watershed Area (excluding lake):	<b>1.02 km<sup>2</sup></b>
Maximum Depth:	<b>20 m</b>	Mean Depth:	<b>7.8 m</b>
Wetland Area:	<b>15 %</b>	Cold Water Fishery?	<b>Yes</b>
Phosphorus (interim average 1998-2007):	<b>5.0 µg/L</b>	Secchi Depth (long-term average):	<b>6.8 m</b>
Phosphorus (long-term average 1992-2001):	<b>5.7 µg/L</b>	Sensitivity:	<b>Moderate</b>

May 2007



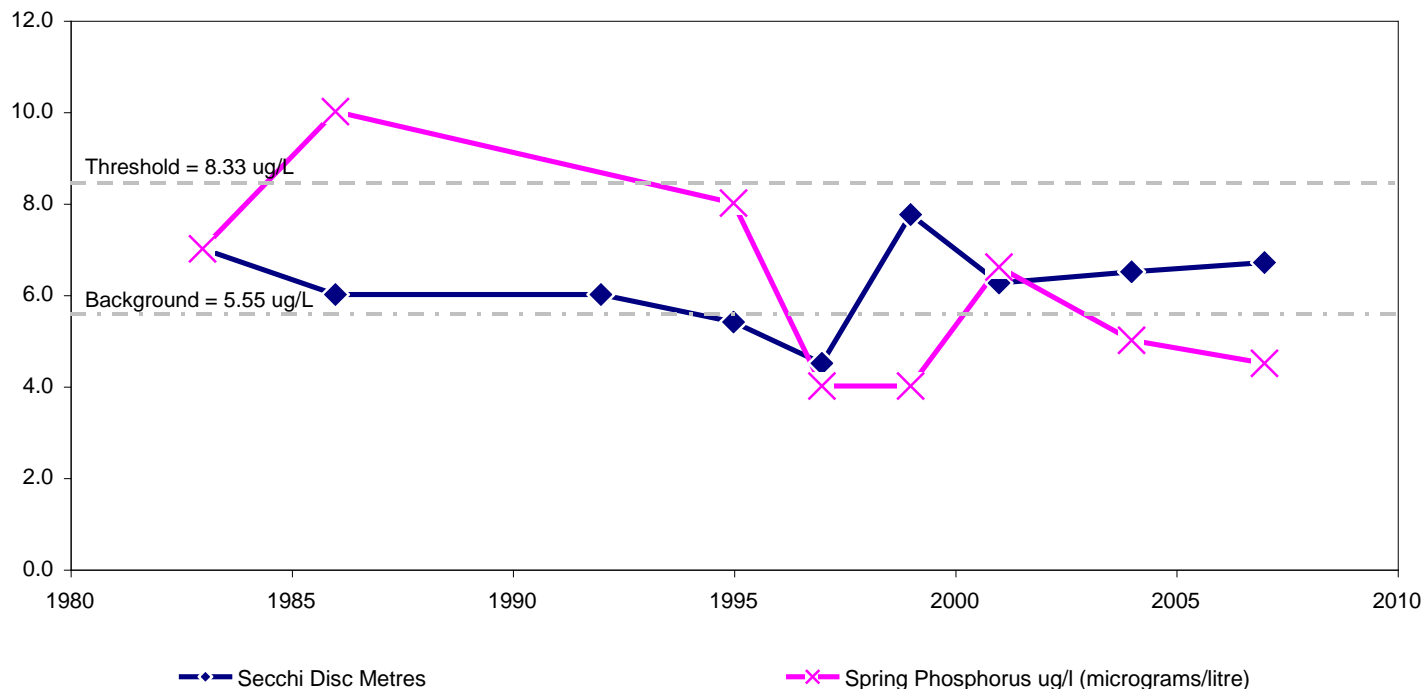
August 2007



--- Temperature (°C) — Dissolved Oxygen (mg/L)

--- Temperature (°C) — Dissolved Oxygen (mg/L)

## Bonnie Lake Long Term Monitoring Data



◆ Secchi Disc Metres

✕ Spring Phosphorus ug/l (micrograms/litre)